
User Manual

Version 1.1

Docol Corporation
 30 Eisenhower Drive, Sharon, MA 02067-2427
 Tel: (888) 481-0842; Fax: (888) 893-5285

www.docol.com

July 2013

A. Introduction

Thank you for purchasing the Docol WS series temperature controller. We sincerely appreciate your decision and believe that our machine will meet your expectations in product quality and experimental results. We are delighted to provide this manual that will serve as guidance for operating this controller. In particular, we would urge you to read through the safety warnings below, although this plug-and-play controller is very easy to operate, your safety is paramount.



SAFETY WARNINGS

- This controller was designed to be used only with selected heating devices that have limited power and their own thermal cut off protection, such as a thermostat or thermal fuse in case of controller failure. Do not use it with an untested device.
- Do not place any objects on the top of controller surface that is used to vent excess heat during its operation.
- The maximum electric current this controller can handle is 15 ampere. For 120-volt AC in US and Canada, this limits the heater power to 1800 watts.
- **Always place the temperature sensor in the right position (the rodent rectum, or the surface of a heating pad) when the controller is on and connected to heating device.** Leaving the sensor elsewhere will form an open loop operation; controller will assume the temperature is low and will provide full power to the heater even if the heating pad is already over-heated.
- The power cord provided with controller is specially designed for high power applications. Do not replace it with regular computer power cord.
- This controller is designed to control devices recommended by Docol Corporation only. Using it to control a not recommended device can be dangerous and cause fire. Docol Corporation is not liable for damages caused by misuse of the controller.
- If an abnormal display or noise is observed, turn the controller off, unplug the power cord and contact the manufacturer before using it again.
- Clean the controller only when it is cool and unplugged.

B. Specifications

Input voltage:	100 to 240 VAC 50 /60 Hz
Output voltage:	Same as the input.
Maximum Current:	15A at 120V, 10A at 240V.
Fuse Size:	15A Fast blow.
Control Action:	Heating (reversed action) or cooling (direct action)
Control Mode	PID, PI, PD P or On/off
Output switching device:	Built-in optically isolated solid state relay with zero voltage crossing witching.
Sensor type:	Pt100 RTD sensor
Sensor tip dimensions:	Beaded head diameter 3 mm, shaft diameter 1.5 mm, shaft length 3 cm.
Sensor cable length,	3.3 ft (1.0 m)
Alarm:	High limit alarm and Open loop alarm with LED and buzzer.
Timer Range:	1 to 9999 minutes.
Temperature resolution:	0.1 °C or 0.1 °F
Temperature display range:	-50.0 to 400.0 °C or -58.0 to 750.0 ° F
Temperature accuracy:	0.1°C or 0.2 °F for 0-85 °C (32.0 to 185.0 ° F)
Dimension:	6x3x7 inch (155 x80x180 mm) W x H x D.
Weight:	2.8 lb (1.5 kg)
Warranty:	1 year for controller and sensor

C. Operating Instruction

1. Description of the controller.

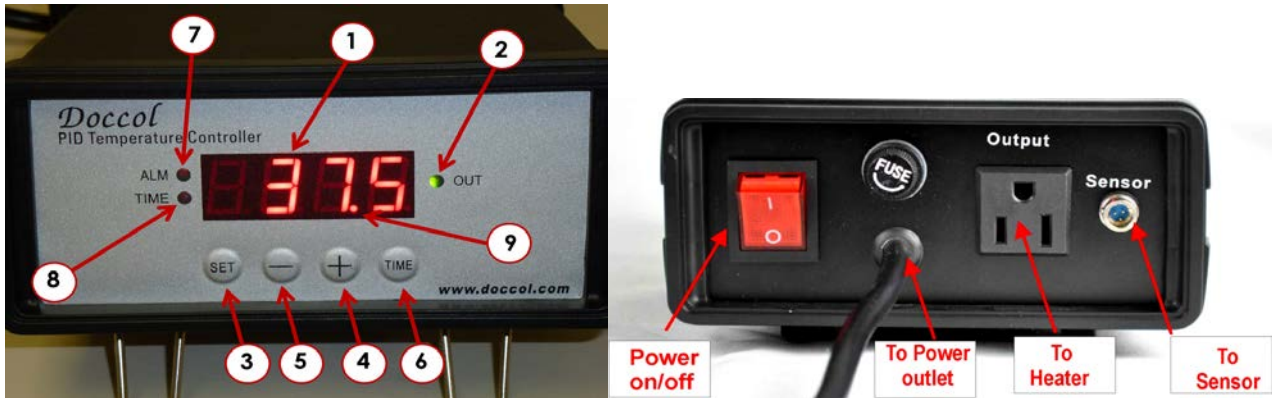


Figure 1. Front (left) and back (right) Panels

(1) **Parameter Window (LED)** - displays temperature values and controller's system parameters.

(2) **Output status indicator** - In normal mode, this LED indicates the heater status. When it is on (lit), the heater is powered. When it is off, the heater power is off. When it is flashing, it means the heater is on and off intermittently to reduce the power output.

(3) **“SET” Key** – press to show current temperature/timer settings, get into parameters setting mode and confirming various actions taken.

(4) **“+” Key** – press to increase displayed value.

(5) **“-” Key** – press to decrease displayed value.

(6) **“Time” Key** – press to change the Parameter Window's display between current timer and temperature values.

(7) **Alarm indicator** - Lit when the alarm is on.

(8) **Timer status indicator** - In normal mode, when “(8)” is on and “(9)” is flashing, LED shows the time passed since it's powered on.

(9) **Mode indicator**, the small “dot” – if it is lit and flashing, the value displayed in the Parameter Window is time, else it is temperature. When it is flashing and “(8)” stays on, “(1)” is the time that has elapsed since it's powered on. When it is flashing “(8)” is off, the controller is in the parameter setting mode. “(1)” is the value can be changed by using “(4)” and “(5)” key.

2. Connecting the controller

The connection of controller should be done in the following steps.

- 1) Plug the temperature sensor to the back of the controller.
- 2) Plug the power cord to the power outlet on the wall.
- 3) Turn on the controller to make sure the controller powers up properly. The temperature display is in the range expected. Then, turn off the controller.
- 4) Plug the heater to the back of the controller. If the heater has a switch, put it in the off position. **Put the sensor inside the container to be controlled.**
- 5) Turn on the controller.
- 6) Turn on the heating device.



Figure 2. Maneuvers to install (left) and remove (right) the sensor.

Remark The connector of sensor contains a slot for correct pin connection. It also has a spring lock to prevent

disconnect by accidentally pulling on the cable. Figure 2, below, shows how to install and remove the sensor.

3. Operating the controller.

3.1 Setting the temperature.

Press SET key twice. Both “(1)” and “(2)” will start to flash. The LED shows the current temperature setting. Use “+” and “-“ keys to change the setting. When finished, press the SET again to confirm the change.

Note: the temperature setting will not be changed if SET is not pressed (confirmed). The display will return to the normal display mode if no key is pressed within 3 seconds.

3.2 Switching the display between temperature and time.

This is done by pressing the Time Key “(6)” once. When “(8)” is on (lit) and “(9)” is flashing at the same time, the LED is in timer mode and shows the actual time passed since the controller was last powered on. When “(8)” is off (not lit), the LED is in temperature mode and shows the current sensor temperature.

3.3 Setting the timer.

Press SET key once and release it, both “(1)” and “(8)” will start flashing. The LED shows the current timer setting in minute. Use the “+” and “-“ keys to change the timer setting. When finished, press the SET again to confirm the change.

Note: the timer setting will not be changed if SET is not pressed (confirmed). The display will return to the normal display mode if no key is pressed within 3 seconds. If you set the timer for 20 hours, the controller will stop sending power to the heater 20 hours after it is powered up. It will display “End” on the window and send an audio beeping sound. Turning off the power and on again will reset the timer.

D. Performance Configuration

This controller is shipped with parameters set for in vivo rodent surgery using 50W AC heating pad for maintaining rectal temperature set at 37.5 °C. You may need to change these parameter values if you use it on other animal strains, or connect to different heating device.

1. Auto-Tune

The controller's most powerful feature is its ability to regulate virtually any heater with stable temperature control. For stable temperature control the controller requires two things; (1) the controller must be set to the correct power level (see next section) and, (2) that it must be *tuned* to the heater being used. Tuning is the process that matches the control characteristics of the controller to the heating characteristics of the heater. The controller is said to be tuned to the heater when its memory is programmed with values telling it how fast the heater warms up, cools off, and how efficiently it transfers heat. Describing how fast the heater heats when electricity is turned on and how fast it begins to cool when it's turned off. These time constants are called the *tuning parameters*.

Every type of heater has its own unique set of tuning parameters. For the controller to heat with stability, it must have been programmed with the tuning parameters for the heater to be used.

2. Use auto-tune function to optimize controller performance settings

The controller is pre-tuned to work with our heating pad. You may use the auto-tuning function to let the controller to determine the PID parameters for other heaters automatically. Auto-tuning function (it's often known as self-tuning) can automatically optimize the PID parameters for your chosen heating system. The auto-tuning function will heat up your heater then let it cool down. It will repeat this heat/cool cycle several times. Based on the response time of the whole heating system, the controller will calculate and set the PID parameters for your heater.

Before using the auto-tune function, you must set the heating equipment up in the exact configuration it should be used. If the heater has its own thermostat or power control, turn both as high as they'll go. Set the controller to the appropriate power level (see next Section). Turn the controller and heater on, and then enter the desired target temperature close to your normal use temperature.

To activate auto-tuning, just enter code 166 to get into the PID setting menu. Set AΓ to 1 then exit the menu (see **Figure 3**). The display will start to flash alternately between AΓ and current temperature, which indicates auto-tuning is in progress. When the display stops flashing, the auto-tuning is finished. Now, the newly calculated PID parameters are set and are used for the system. The new parameters will store in the memory even the power is off.

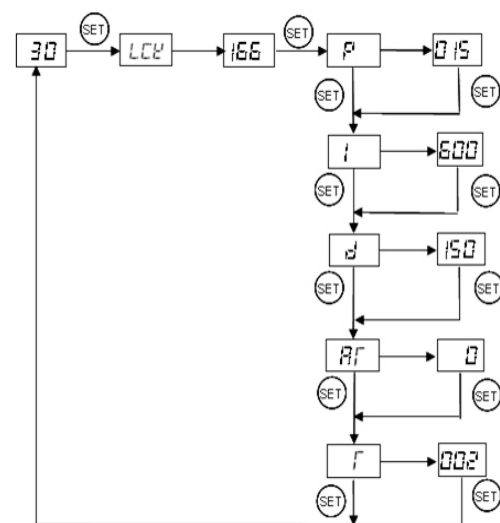


Figure 3. Code 166 parameter setup

The new parameters will store in the memory even the power is off.

***Important: You should always write down your old PID parameters, before letting the controller to perform auto-tuning. The P, I, and D parameters have been pre-set to 45, 200, and 250, respectively.** This way if something goes wrong, you can always go back to your old PID parameters. Basically, you must setup your heating system close to your actual heating environment.

The duration of auto-tuning depends on how fast the system is responding to the heating and cooling cycle. If the temperature of the heater takes a long time to drop when heater is off, the auto-tuning could be a very long tuning process. This is especially true with a well-insulated heater. The auto-tuning should be able to tune most of your chosen with fairly good result.

3. Manual input of PID parameters.

The controller parameters are divided into two groups. The **first group** of parameters is related to the control performance. They need to be adjusted based on the system to be controlled. If you have tried auto-tune and the parameters we provided but feel the performance is not ideal, the following sections discuss the definition of these parameters and how to change them.

3.1 Details about each parameter

- LCK. Parameter lock. This function is used to prevent user to change the critical parameters by accident. User has to enter the code **166** to access the parameter setting menu (**Figure 3**).
- P. Proportional band. It is in 0.1 degree unit. This parameter control the output of the controller based on the difference between the measured and set temperature. Larger the P number means the weaker the action (lower gain). When the sensor temperature is 10 degrees below the proportional band (10 degrees below the setting), the controller will have 100% output. When the temperature is 5 degree below the set point, the output is 50%. When the temperature is equal to the setting, the controller will have 0% output (assuming integral and derivative functions are turned off). This constant also affects both integral and derivative action. Smaller P values will make the both integral and derivative action stronger. Please note the value of the P is temperature unit sensitive. If you found an optimized P value when operating the controller in Celsius, you need to multiply the P by 1.8 when changing the temperature unit to Fahrenheit.
- I. Integral time. The unit is in second. This parameter controls the output of controller based on the difference between the measured and set temperature integrated with time. Integral action is used to eliminate temperature offset. Larger number means slower action. When temperature fluctuates regularly (system oscillating), increase the integral time. Decrease it if the controller is taking too long to eliminate the temperature offset. When I=0, the system becomes a PD controller.
- d. Derivative time. The unit is in second. Derivative action contributes the output power based on the rate of temperature change. Derivative action can be used to minimize the temperature overshoot by responding its rate of change. The larger the number is, the faster the action will be. The derivative action change the controller output based on the rate of change rather than the net amount of change. This will allow the controller to act sooner. It will turn the heater to full power before the temperature drops too much.
- AT: auto-tune. See above auto-tune section.
- T, cycle rate. The unit is in second. This unit determines how long for the controller to calculate each action. This parameter should remain at 2 second for almost all applications.

Table 1. Initial settings under code 166

Symbol	Description	Range	Initial
P	Proportional band (in 0.1 degree)	0-600	45
I	Integral constant (second)	0-900	200
d	Derivative constant (second)	0-300	250
AT	Auto-tune	0=off 1=on	0
T	Cycle rate (second)	1-100	2

3.2 Setting parameter values

- Press and hold SET key for 4 seconds until LED display “LCK”, and then release the SET key. The display will show “0”. To get into parameters setting mode, you need to key in the pass code. Use “+” and “-” keys to adjust the display to 166 (which is the pass code) and press SET.
- The LED will show “P” for a second and then its P setting value, Use “+” and “-” keys to change the setting. When finished, press the SET again to confirm the change.
- The display will show the “I” for a second and its I setting value next, use the same “P” setting procedure to set the I value. When finished, press the SET again to confirm the change.
- The display will show the “d” for a second and its value next. Use the same “P” setting procedure to set the d value. When finished, press the SET again to confirm the change.
- The next setting is AT, the auto-tune. Use “+” to set the value to 1 and press SET will activate the auto-tune.
- The next setting is the “t” setting, use “-” and “+” to set the cycle time value. This value should remain 2 for most application.
- After change the PID parameter, the controller needs to be turned off and on again for the best result.

E. Other system parameters

The **second group** is about the system configuration and set up. Once they are set, they normally do not need to be changed. This group of parameters can be accessed by input code 155. If you don't want your system be altered by other person, do not let other people know this code. Table 2 shows the list of the parameters, their range and initial set value when left the factory.

Details about each parameter.

- SC, calibration offset. The parameter is used to make the input offset to compensate the error produced by sensor. Each unit is 0.1 degree. e.g. if the temperature displays 2.0 °C in ice water mixture, set SC=-2.0 will make the display to shown 0.0 degree.
- AL, Alarm temperature in degree. When the temperature passes the alarm set value, the alarm LED and buzzer will be turned on. When temperature drops to that value, the LED and buzzer will be turned off. The alarm is for high limit alarm only. It will not shut off the out.
- FA, Alarm buzzer control. When FA=1, the buzzer will be on when alarm LED is lit. When the FA=0, the buzzer will not be turned on at the alarm temperature.
- oAL, Open loop alarm. This parameter is for detecting an open loop in the control system. e.g. if the sensor was forgotten to be inserted in the oven, or the sensor is defective, or the heater is defective. When enabled (oAL=1), it will shut off the output if the temperature increased less than 3 °C (5 °F) after the controller is powered up for 5 minutes. The alarm buzzer will be turned on at the same time. The display will flashing OPEN (oPEn).
- Hy, Hysteresis band (or dead band). This parameter is used for on/off control only. In the on/off heating mode, the heater will be turned off when T = SV, and turned on again when T<SV-Hy. e.g. If SV=100 °C. Hy=3.0 °C, the heater will heat until temperature reaches 100.0C. It will be turned on again when temperature drops below 97.0 °C. For the cooling mode, the compressor will be turned off when T=SV. It will be on again when T>SV+Hy.
- Cool. When Cool=0, the controller is set for heating control (reverse action). When Cool=1, the controller is set for cooling control (direct action).
- Out, Output power reduction. It is expressed as a percentage value. This function will allow you to control the maximum output power delivered by the heater. For example, if you set Out=50 and your heater is 1000 watts, the output will use 50% of the 1000 watts as the full output. It thinks the 1000W heater as a 500W heater. When the PID algorithm determines 50% output value, the actual power output will be 250 watts.
- C-F, Display unit setting. You can set the display either Celsius or Fahrenheit.
- TK, Timer. When TK is set to 1, the timer is on. If you want the controller stays on without turning of by itself.

Table 2. List of control parameters and the initial settings under code 155

Symbol	Description	Range	Initial
SC	Offset (degree)	-20.0 ~ +20.0	0~0.3
AL	Alarm Setting	-58.0 ~ +392.0°F -50.0 ~ +200.0°C	40
FA	Alarm buzzer	0=off 1=on	0
OAL	Open loop alarm	0=off 1=on	0
Hy	Hysteresis band	0 ~ 100	3
COOL	Control mode (heating or cooling)	0=heat 1=cool	0
Out	Output power reduction (%)	1-100	100
C-F	Temperature unit	°C or °F	°C
Timer	Enable/disable timer function	1 = on, 0 = off	1

Setting parameter values

This group of parameters is accessed by input code 155. Figure 4 is the flow chart that shows how they can be changed.

Press and hold SET key for 4 seconds until Parameter Window displayed "LCK". Release the SET. The display will show "0". Use "+" and "-" keys to adjust the display to 155 (another pass code) and press SET.

Setting the calibration offset. The parameter window will first show "SC" for a second and then its value, Use "+" and "-" keys to change the setting. When finished, press the SET again to confirm the change. For example, if the temperature is 1 C too high during calibration then use "-" to set the value to -1 to offset value.

Setting the output reduction. The parameter window will first show "OUT" for a second and then its value, Use "+" and "-" keys to change OUT value to your desired limit value and press SET.

Setting Celsius (C) or Fahrenheit (F). When SET is pressed, the

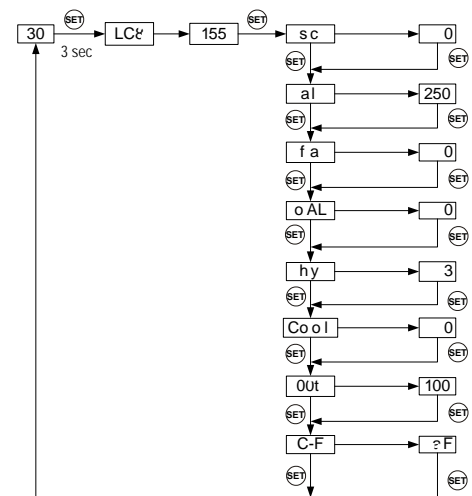


Figure 4. Code 155 Parameter setup flow chart

display will show "C- F" and then its value of either "C" or "F". Press "-" for C or "+" for F. The setting for AL, FA, oAL, Hy, Cool and TK are similar as the rest of parameters.

F. Warranty

Docol Corporation warrants this controller to be free from defects in materials and workmanship for a period of one (1) year from the date of the original purchase when the device is utilized under normal condition. The sensor of the controller is warranted for 90 days. This warranty is subject to the following conditions:

If the appliance is found to be defective in material or workmanship by Docol Corporation, we will repair or replace it free of charge. A dated proof of purchase may be required.

Docol Corporation's liability is limited solely to the cost of the repair or replacement of the unit at our discretion. This warranty does not cover normal wear of parts and does not apply to any unit that has been tampered with or used for commercial purposes. This limited warranty does not cover damage caused by misuse, abuse, negligent handling or damage due to faulty packaging or mishandling in transit. This warranty does not cover damage or defects caused by or resulting from damages from shipping or repairs, service or alterations to the product or any of its parts which have been performed by a repairperson or facility not authorized by Docol Corporation.

This warranty is available to the original purchaser of the unit and excludes all other legal and/or conventional warranties. The responsibility of Docol Corporation, if any, is limited to the specific obligations expressly assumed by it under the terms of the limited warranty. In no event is Docol Corporation liable for incidental or consequential damages of any nature whatsoever. Some states/provinces do not permit the exclusion or limitation of incidental or consequential damages and therefore the above may not apply to you.

This warranty gives you specific legal rights and you may also have other rights that vary from state to state or province to province.

*Important: Carefully pack item to avoid damage in shipping. Be sure to include proof of purchase date and to attach a tag to item before packing with your name, complete address and phone number with a note giving purchase information, model number and what you believe is the problem with the item. We recommend you insure the package (as damage in shipping is not covered by your warranty). Mark the outside of your package "ATTENTION CUSTOMER SERVICE". We are constantly striving to improve our products and therefore the specifications contained herein are subject to change without notice.